

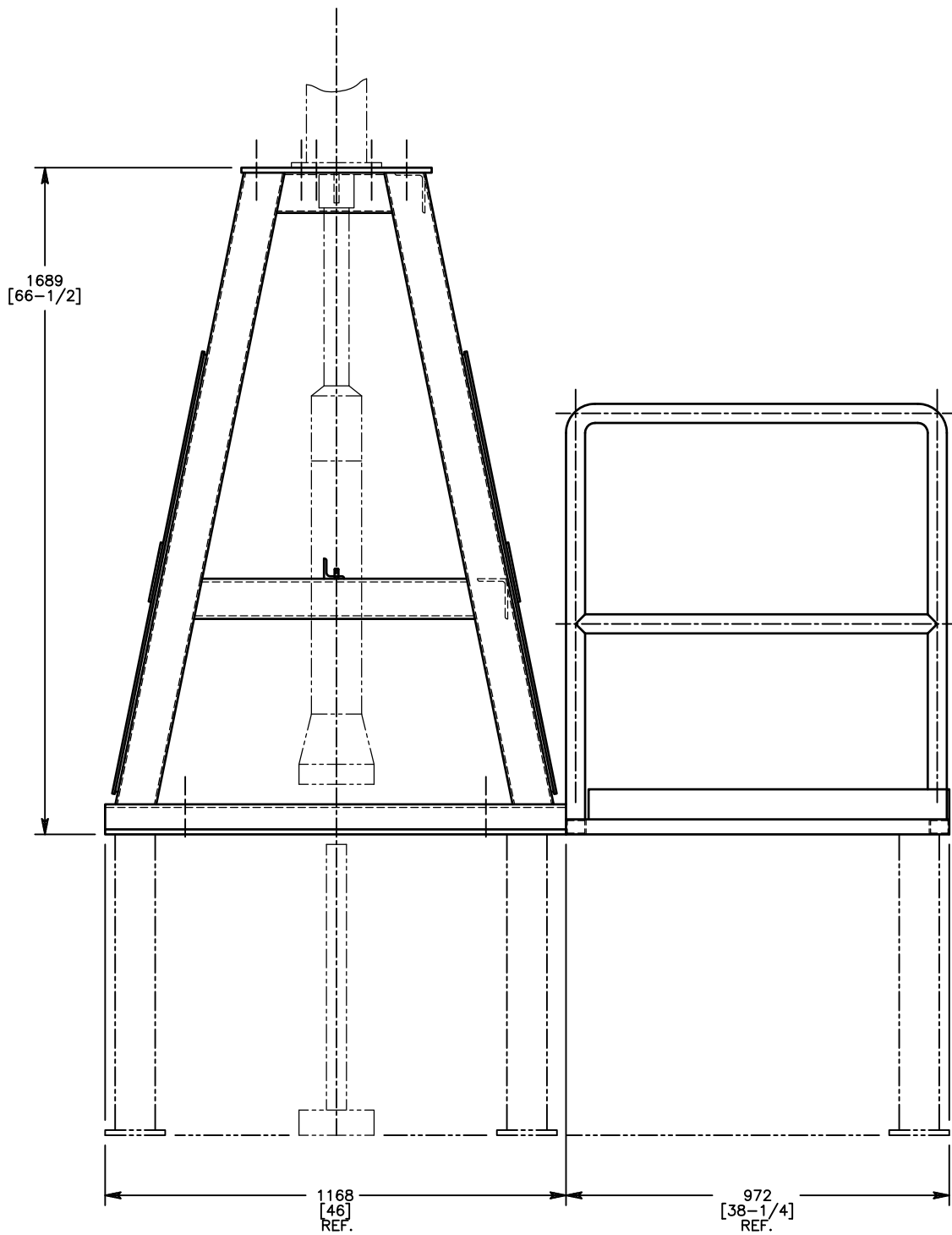
MILLIMETERS
INCHES

NOTE:
THIS IS A RECOMMENDED NOZZLE STAND AND IS NOT SUPPLIED BY PYROTEK.

SNIF	
USED ON	ASSEMBLY DRAWING

F	BM WAS ON DWG. RETYPED IN LOTUS NOTES	ECN - S903	A.B.	M.J.F.	T.B.	8-12-99
E	REDRAWN, WAS "E" SIZE	ECN - S290	A.B.	M.J.F.		5-9-90
REV	DESCRIPTION	BY	CHK'D	APPV'D	DATE	

BUSINESS CONFIDENTIAL THIS DRAWING AND THE INFORMATION CONTAINED THEREIN ARE THE PROPRIETARY AND CONFIDENTIAL PROPERTY OF PYROTEK, INC. AND MAY BE USED ONLY FOR AUTHORIZED PURPOSES. THIS DRAWING MAY NOT BE REPRODUCED WITHOUT PYROTEK'S PRIOR WRITTEN CONSENT.		Pyrotek SNIF® SYSTEMS 765 OLD SAW MILL RIVER ROAD TARRYTOWN, NY 10591-6720		TITLE: NOZZLE STAND AND PLATFORM ASSEMBLY	
TOLERANCES UNLESS OTHERWISE SPECIFIED INCH DIMENSIONS FRACTION ± 1/16" DEC ± .005 ANGLE ± 0.5° METRIC DIMENSIONS 0 mm = ± 0.0 mm = ±		NAME DRAWN CHECKED APPROVED SIMILAR TO	DATE 4-29-77 5-4-77 10-2-77	REV F	
63 ALL SURFACES MAX. ROUGHNESS -REMOVE ALL BURRS. -BREAK ALL SHARP EDGES		D-2032001		SCALE 1/8 SHEET 1 OF 2	



SNIF	
USED ON	ASSEMBLY DRAWING

REV	DESCRIPTION	BY	CHK'D	APPV'D	DATE

BUSINESS CONFIDENTIAL THIS DRAWING AND THE INFORMATION CONTAINED THEREIN ARE THE PROPRIETARY AND CONFIDENTIAL PROPERTY OF PYROTEK, INC. AND MAY BE USED ONLY FOR AUTHORIZED PURPOSES. THIS DRAWING MAY NOT BE REPRODUCED WITHOUT PYROTEK'S PRIOR WRITTEN CONSENT.		Pyrotek SNIF® SYSTEMS 765 OLD SAW MILL RIVER ROAD TARRYTOWN, NY 10591-6720	
TOLERANCES UNLESS OTHERWISE SPECIFIED INCH DIMENSIONS FRACTION ± 1/16" DEC ± .005 ANGLE ± 0.5° METRIC DIMENSIONS 0 mm ± .0 0.0 mm ± .0 63 ALL SURFACES MAX. ROUGHNESS -REMOVE ALL BURRS. -BREAK ALL SHARP EDGES		NAME DRAWN JAHID CHECKED P.A. APPROVED J.V.G. SIMILAR TO	DATE 4-29-77 5-4-77 10-2-77
		TITLE: NOZZLE STAND AND PLATFORM ASSEMBLY	
		D-2032001	
		SCALE 1/8	SHEET 2 OF 2
			REV F